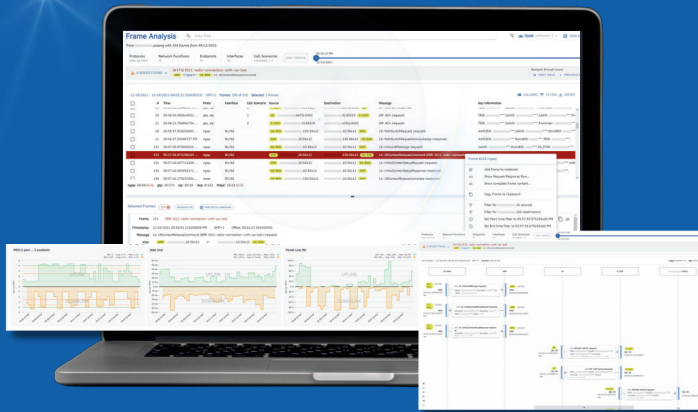


SILVERENGINE

Software Solutions | Software Products | Professional Services | Consulting
For telecom operators and vendors.

Call Tracer

5G and 4G communication insights
Analyze 5G NSA/SA, EPC, VoNR, VoLTE and VoIP quality of experience



Your Benefits

- ✓ The SEA Call Tracer Tool is helping engineers to understand issues 10x faster, speeding up root cause identification in live 5G & 4G networks
- ✓ Distraction free analysis
Automatic correlation of messages from different interfaces related to a subscriber.

All 5G | 4G | IMS Protocols Supported

5G HTTP/2 | NGAP/NAS | S1AP/NAS | PFCP | SIP | MEGACO | Diameter | GTP-U | GTPv2 | RTP/RTCP | LDAP

Features

Correlation engine

Automatic correlation per subscriber across all protocols and domains (4G/5G and IMS)

Events overview

Message events sequence overview across all protocols in one plot graph

Automatic groupings

Automatic logical grouping of 3GPP NE/NF and interfaces in a message flow for easier and clutter free troubleshooting

Speech quality KPIs

Speech quality KPIs from RTP and RTCP protocols – MOS, Speech Mutes and One-Way-Audio in direct relation to C-Plane events and Mobility



Overview – Head start to quickly focus on what is important for fault analysis



www.silverengine.de

Contacts us: niklas.gustavsson@silverengine.de | marek.kocan@silverengine.de

Read more here



Software Solutions | Software Products | Professional Services | Consulting
 For telecom operators and vendors.

Call Tracer - Your Troubleshooting Companion

See how we can ease your workday and provide insights for a confident answer about the root cause

Which NF/NE, 3GPP interfaces or protocols have problems in my trace file?

In SEA Call Tracer tool you get automatic and instant insights.

Overview about problematic protocols, interfaces and NE/NF as summary and on a timeline.

Automatic detection of 3GPP logical interfaces for all protocols and domains 5G, 4G and IMS.

Automatic grouping of NE and NF for a clutter free and easy troubleshooting environment – work with logical NE/NF instead of IP addresses. In 5G SA an IP mean less due to dynamic nature of cloud instances.

Struggling mapping messages to subscribers' Call Flow scenarios?

We provide automatic Call flows detection according to 3GPP definitions across domains and C-Plane & U-plane like 5G Registration procedures and Mobile Originating VoNR Call.

Focus on the relevant call flow context instead of getting distracted by out of context protocol messages.

How do I get meaningful U-plane KPIs?

Other tools are built-in and only address the view per message and protocols, no one is really helped to see voluminous User-plane messages like RTP and RTCP interleaved with C-plane messages.

In SEA Call Tracer tool you get automatic high resolution meaningful insights on U-plane KPIs, for example Speech quality KPIs like MOS, Speech Mutes and One-Way-Audio in direct relation to C-Plane events and Mobility.

Struggling to filter out communication between certain NF/NE?

Use our easy search and filter capabilities across protocols within the whole trace or per call scenario.

Free text search or select from menu automatically detected 3GPP interfaces, NF/NE or protocols.

Difficulties to understand which messages from different protocols and interfaces belongs to a subscriber?

We offer an Automatic built-in per subscriber correlation engine – get the full view on each subscriber with no efforts.

Each subscribers' identities for C-plane and U-Plane are summarized in the correlation overview call scenario panel.

Automatic error highlighting – one click takes straight to the you message error with kept subscriber context.

Supported trace file formats & deployment

Call Tracer works with industry defacto format pcap or pcapng files.

Supports multiple subscribers and protocols events interleaved in file.

Automatic file merging at bulk upload in the tool.

Deployment: SaaS or On-Prem.

Call Tracer tool is part of SEA portfolio - Subscriber Experience Analytics

www.silverengine.de

Contacts us: niklas.gustavsson@silverengine.de | marek.kocan@silverengine.de

Read more here

